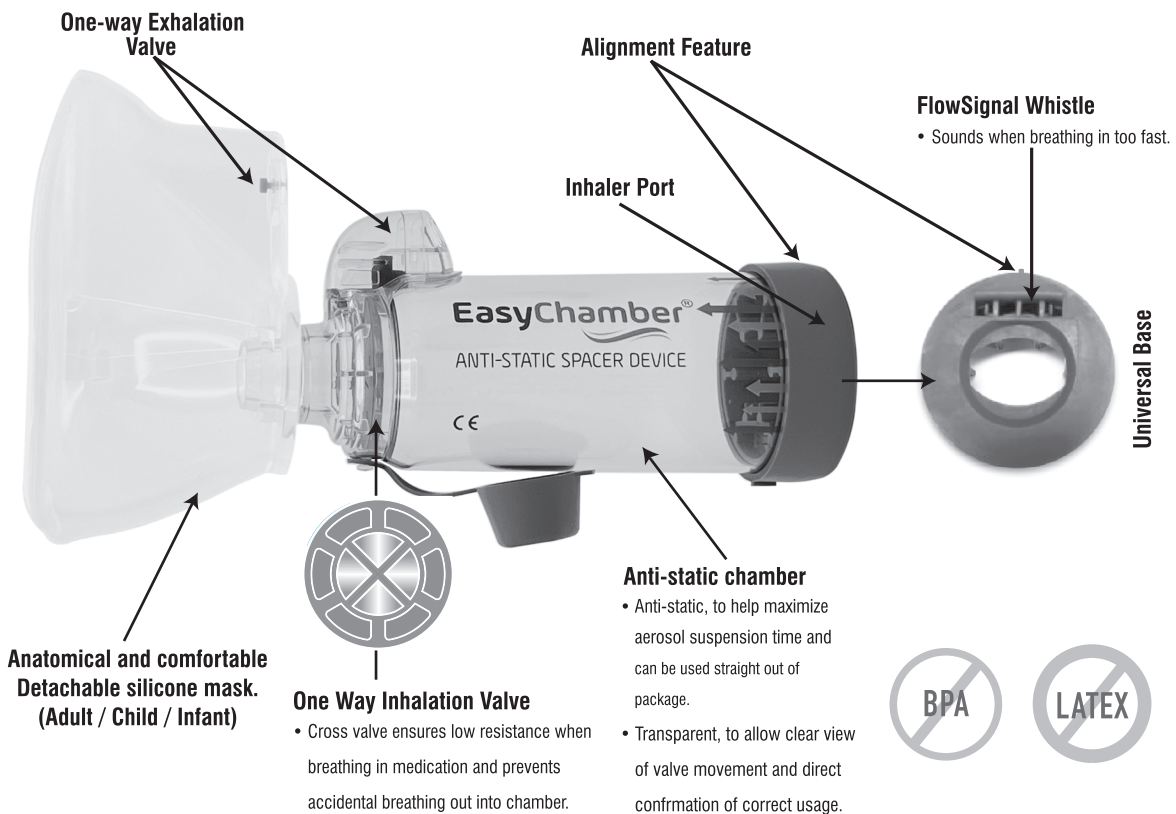


EasyChamber[®]

SPACER DEVICE

- **Mouthpiece**
(Use from 5+ years)*
- **With Adult Mask**
(Use from 6+ years)*
- **With Child Mask**
(Use from 2-6 years)*
- **With Infant Mask**
(Use from 0-24 months)*

* All ages are approximate



TriOn Pharma Ltd-UK
26-30 London Road,
Cowplain PO8 8DL, United Kingdom
info@trionpharma.co.uk



EC REP

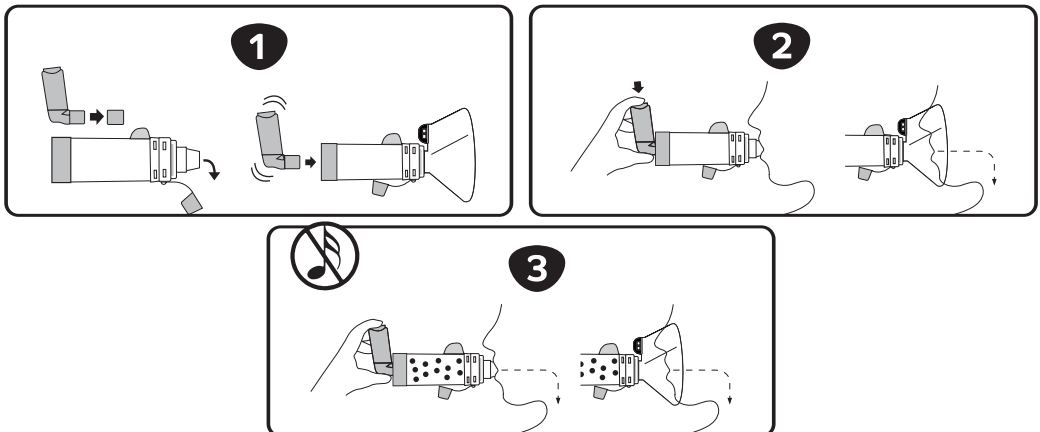
MED DEVICES LIFESCIENCES B.V.
Keizersgracht 482, 1017 EG Amsterdam,
The Netherlands Email: info@meddevices.net,
Phone: +31-202254558

Instructions For Use

(Single Patient Use only)

Intended Use: The EasyChamber Spacer is intended to be used along with a pressurized metered-dose inhaler (pMDI) to deliver aerosol medication from the inhaler to your lungs as advised by your healthcare professional. If you have any questions about the performance or use of this product, please contact your healthcare professional.

Before Each Use: The EasyChamber Spacer can be used directly out-of-package. Ensure these instructions and the instructions supplied with the inhaler have been read and are kept available all time. Carefully examine the chamber and replace immediately if it is damaged or has missing parts.



Using the Easychamber Spacer

1. Remove caps from inhaler and EasyChamber Spacer; Shake the inhaler immediately before use as per the instructions supplied with it. Then insert inhaler into the back of the spacer as shown.

Sit or stand up straight and slightly tilt your chin up as this helps the medicine to reach your lungs.

2. **If using Mouthpiece only:** Place and close your lips around mouthpiece of the spacer to ensure effective seal, ensuring your tongue remains flat and does not obstruct the opening of mouthpiece. Follow a or b, whichever you feel more comfortable:

a) Single Breath and Hold Technique: Exhale then press the inhaler once at the beginning of a slow inhalation. Breathe in slowly and deeply through the chamber mouthpiece until a full breath has been taken. Take the mouthpiece of the spacer out of your mouth and with your lips closed, hold your breath for up to 10 seconds or for as long as you comfortably can. Then breathe out gently away from the spacer. **OR**

b) Tidal Breathing Technique: Exhale and press the inhaler once at the beginning of a slow inhalation. Breathe in and out through the chamber for 2–3 breaths keeping lips sealed around chamber mouthpiece.

If using **EasyChamber With Mask:** If mask is used, assemble the mask by pushing the face mask firmly onto the spacer and place the mask over the mouth and nose, ensuring there are no gaps. Press the inhaler once at the beginning of a slow inhalation. Hold the mask in place and

breath in and out slowly and deeply through the mask for 5-6 breaths.

Administer one (1) puff at a time. If you have been prescribed more than one puff, keeping spacer away from your mouth, wait at least 30 to 60 seconds before taking the next puff. Inhaler should be shaken between each puff and then follow the steps 2.

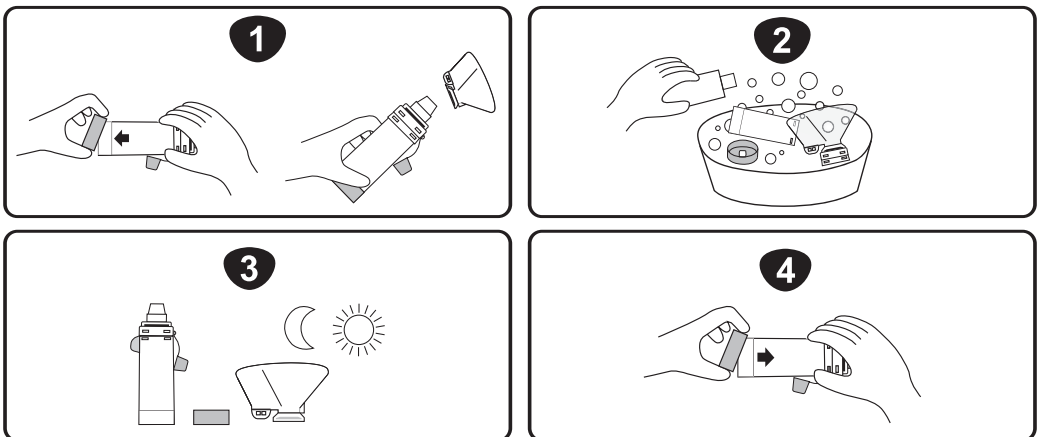
Remove the inhaler and replace the caps on EasyChamber and Inhaler. Rinse the mouth with water, gargle and spit it out.

Notes:

- **SLOW DOWN** if you hear the whistle sound which indicates you are inhaling too quickly. Visit www.easychamber.co.uk for instruction videos.
- **Disposal Note:** The EasyChamber Spacer and accessories can be disposed of as normal household waste unless this is prohibited by local regulations on waste disposal.

Cleaning Instructions

Clean the spacer at least once a week by following steps
(Do not clean with boiling or hot water as this will damage your spacer.
Do not wash/rinse directly under the tap)



1. Remove the back piece and disassemble the other parts (eg. Mask) of the spacer.
2. Soak all parts for 15 minutes in lukewarm clean water with mild liquid detergent. Agitate gently. Do not rinse the chamber as leaving a very thin film of detergent enhances the performance of the chamber.

If using dishwasher, place parts in top rack of dishwasher. Ensure EasyChamber is securely placed face up. Run the dishwasher on a normal or light cycle and avoid heated dry.

3. Shake out excess water and allow to air dry in vertical position. Do not rub dry.
4. Replace back piece firmly when all components are completely dry and ready for use. Centre the alignment feature on the back piece with exhalation valve on the chamber.



CAUTIONS

- It is recommended that the EasyChamber spacer should be replaced with a new one after one year of use.
- Please use according to physician's or licensed healthcare professional's instructions. If the patient's symptoms worsen, please seek medical attention.
- Keep out of the sight and reach of children. Store in a clean, dry area when not in use.
- To be use with metered dose inhaler only. Do not use with Dry Powder Inhalers or Nebulizers.
- Failure to follow instructions may affect medication delivery or cause inhalation issues.
- This spacer is for single patient use only. Do not share this spacer device.
- Dishwashing with overly dirty dishes is not recommended. If cleaning in dishwasher use a rinse aid.
- EasyChamber may be permanently damaged if boiled, sterilized or cleaned in a dishwasher at a temperature 70⁰ C or above.



Medical device



Single patient-multiple use



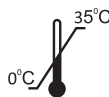
Caution



Keep away from sunlight



Consult instructions for use



Storage temperature



Do not use if package is damaged



Non-sterile



UK Conformity Assessed



Not Manufactured with Natural Rubber Latex



CE marking



Recyclable



Manufacturer



Date of Manufacturing



Use by date



Lot-Number



For optimum performance replace after 12 months.



Authorised Representatives in European Community

